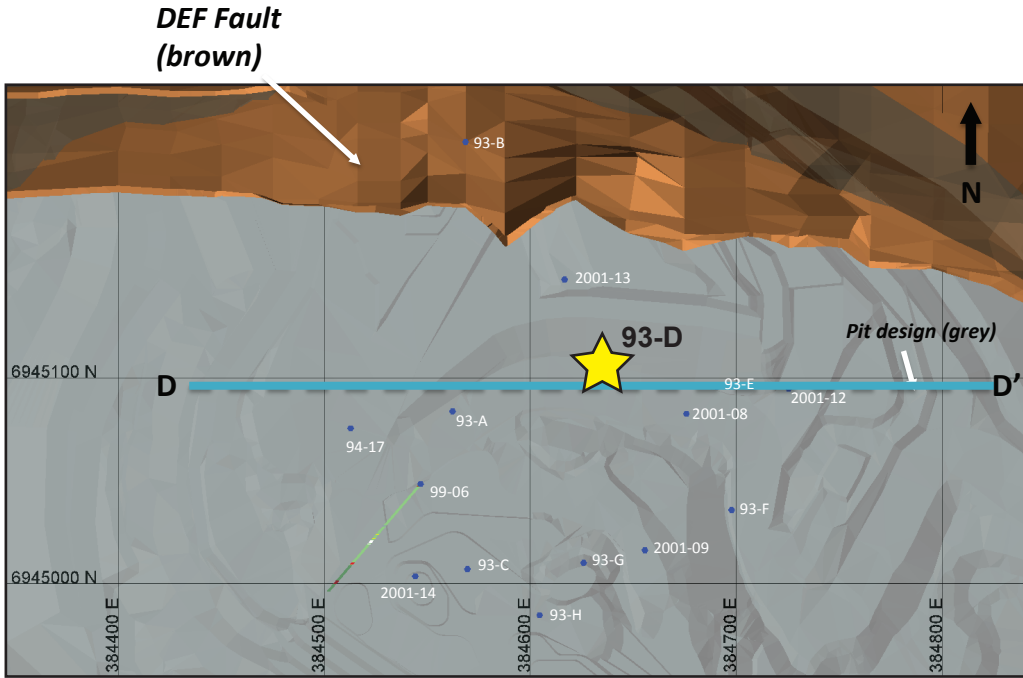


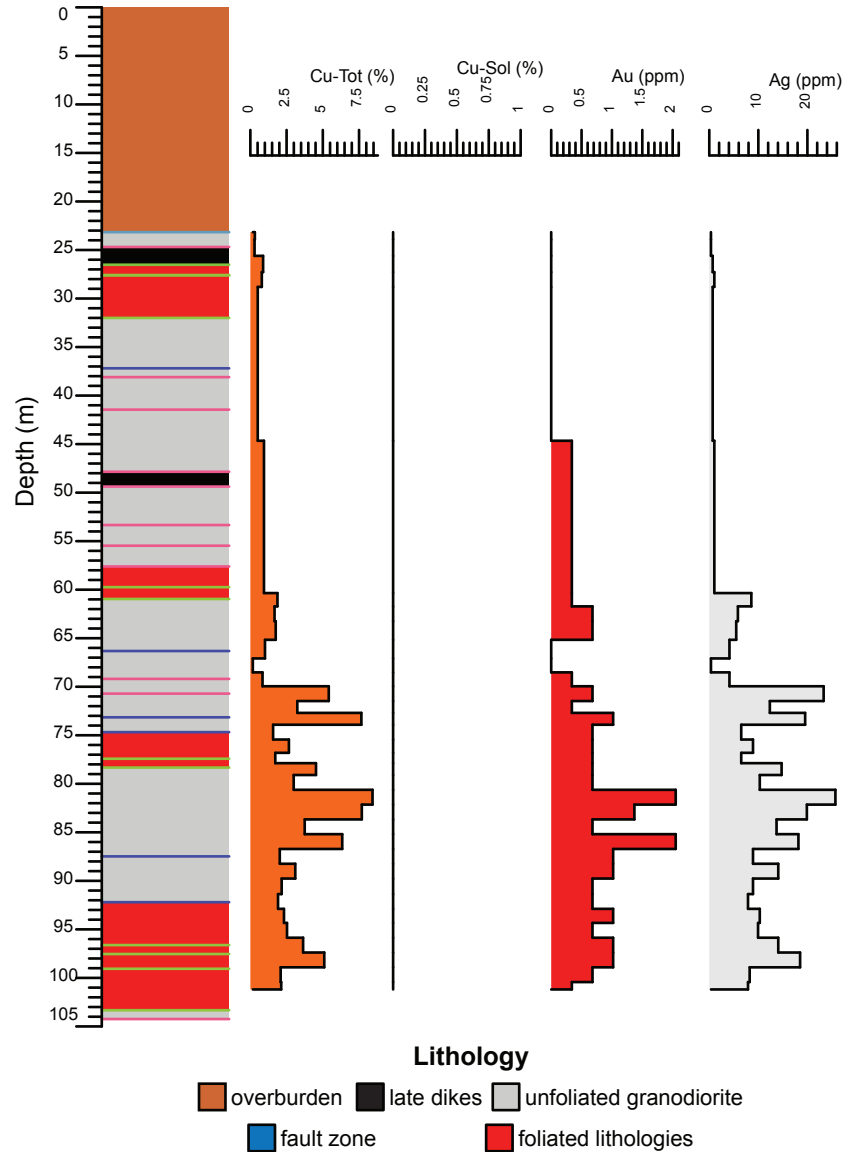
Minto deposit (Yukon MINFILE 115I 021, 022)
Drill Hole: 93-D, Minto Main deposit

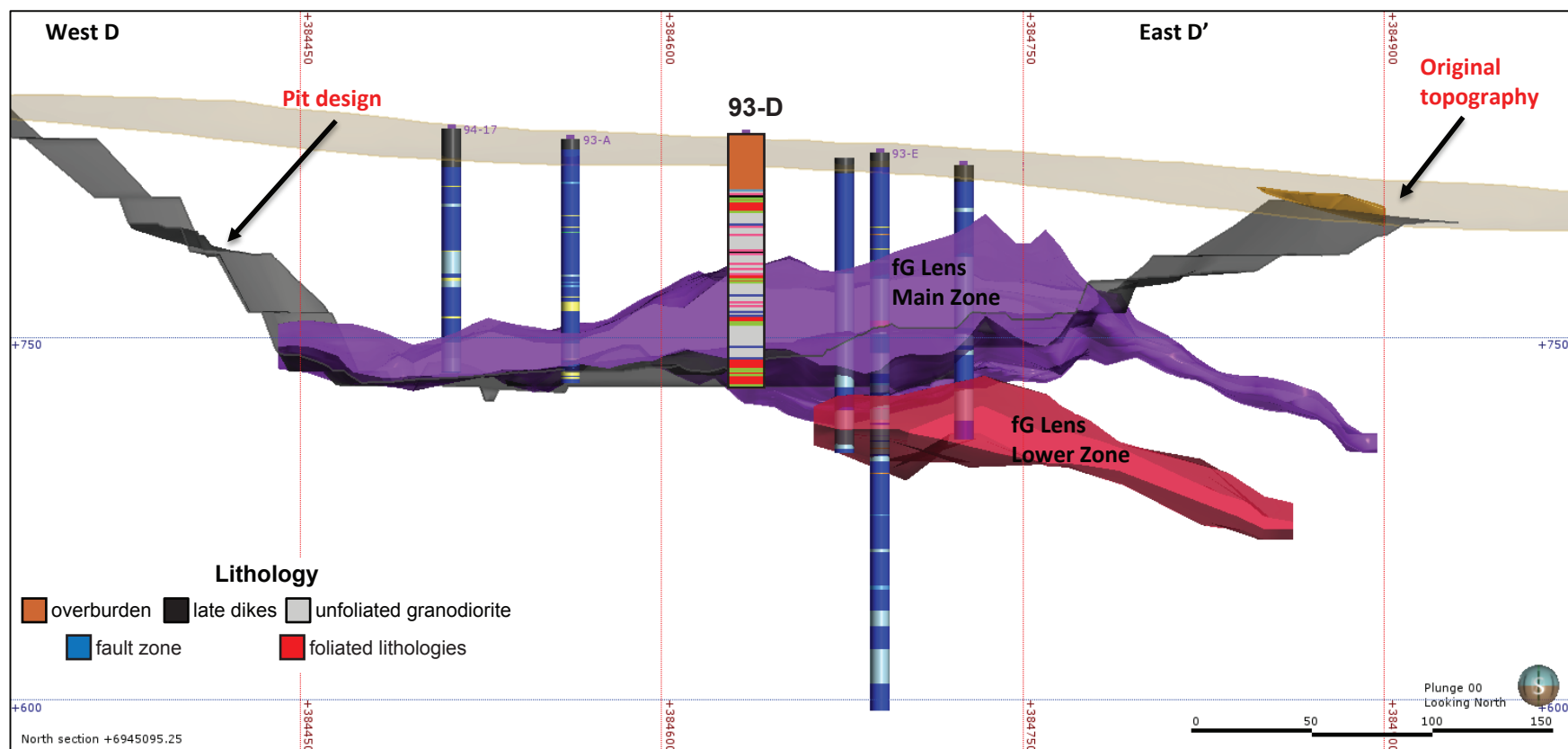
Area	Hole No.	Azimuth	Dip	Length (m)	Collar coordinates (NAD83, Zn 8)
Minto Main	93-D	0	-90	104.24	384634mE, 6945108mN



Above: Orthophoto of Minto area. Collar location of 93-D shown by yellow star, blue circles show collar locations of other drill holes in YGS collection.

Right: Simplified strip log with selected assays.





Above: Simplified vertical east-west cross-section through the Minto Main pit.

Right: Selected assays through Minto Main zone. Cu - Tot = sulphide and non-sulphide copper, Cu-Sol = non-sulphide copper

Hole	From (m)	To (m)	Interval (m)	Sample	Cu (%)	Cu-Sol (%)	Au (ppm)	Ag (ppm)
93-D	69.19	70.71	1.52	4607	0.8	0.0	0.3	4.1
93-D	70.71	72.24	1.53	4608	5.4	0.0	0.7	23.3
93-D	72.24	73.15	0.91	4609	3.2	0.0	0.3	12.3
93-D	73.15	74.68	1.53	4610	7.7	0.0	1.0	19.5
93-D	74.68	76.2	1.52	4611	1.6	0.0	0.7	6.5
93-D	76.2	77.42	1.22	4612	2.7	0.0	0.7	8.9
93-D	77.42	78.33	0.91	4613	1.7	0.0	0.7	6.5
93-D	78.33	79.86	1.53	4614	4.5	0.0	0.7	14.7
93-D	79.86	81.38	1.52	4615	3.0	0.0	0.7	10.3
93-D	81.38	82.91	1.53	4616	8.4	0.0	2.1	25.7
93-D	82.91	84.43	1.52	4617	7.7	0.0	1.4	19.9
93-D	84.43	85.95	1.52	4618	3.8	0.0	0.7	13.7